

information on childcare

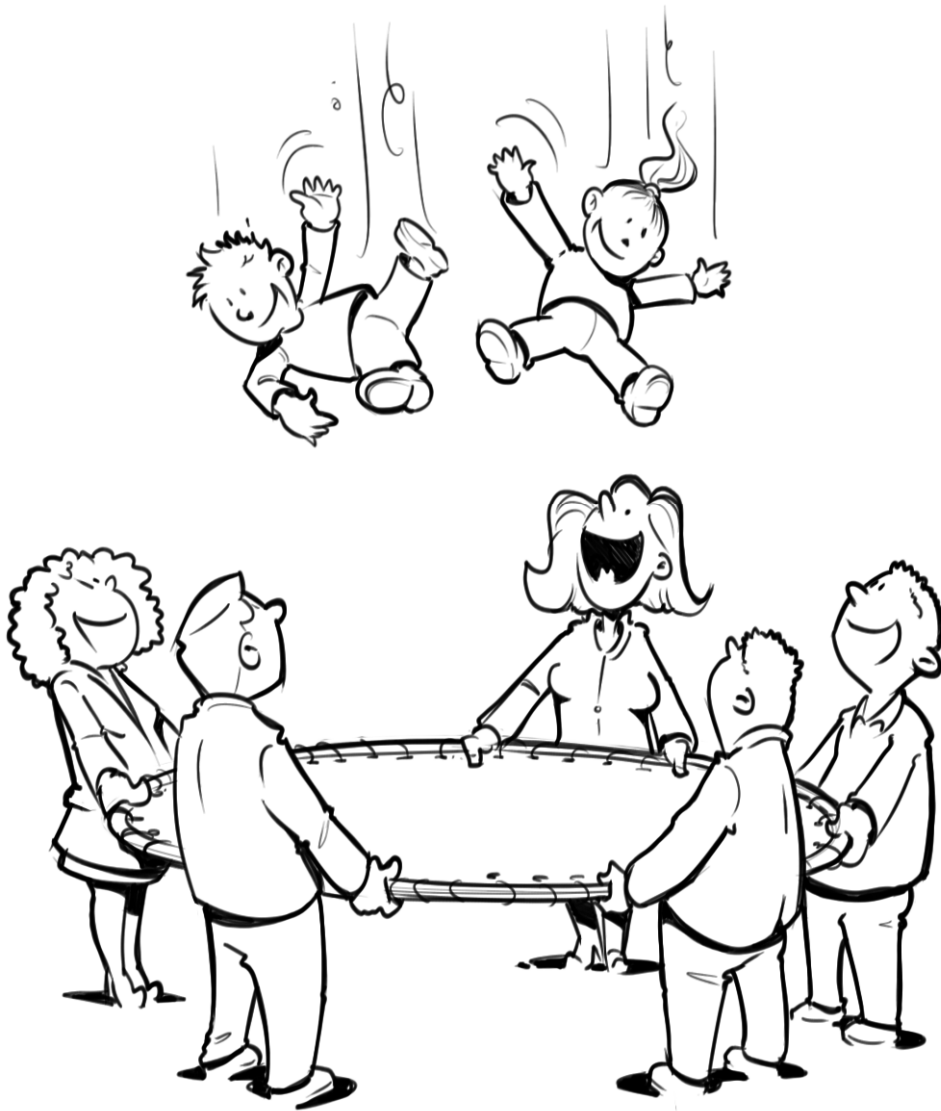


Table of contents

1	welcome	3
2	organization	4
3	child care (general)	8
4	child day care (“kdv”)	10
5	child care “Spelenderwijs”	13
6	after school care (“bso”)	16
7	child care provided by guest parent	20
8	registrations	22
9	financial matters	25
10	overview of locations and contact details	27

1 welcome to kinderopvang Wageningen

Please find enclosed the information package you have requested regarding child day care with “Kinderopvang Wageningen”.

This package contains information on our organization, the different kinds of day care available, registration, fees and an overview of our locations.

If you consider registering your child, please visit our website www.kinderopvang-wageningen.nl where you can find a short presentation of our different locations (see “locaties”).

Of course you are also welcome to visit our locations in person. You can make an appointment for a visit with one of our pedagogic assistants at the location you are interested in, so they can schedule time for your visit.



Please do not hesitate to contact us, should you have any questions regarding this information package.

This information package is regularly updated. Please always refer to our website for the most recent information.

2 about our ORGANIZATION

Kinderopvang Wageningen is the trade name for Kinderopvang Wageningen BV.

A little bit of history:

The Centrale Organisatie Kinderopvang Wageningen - COKW (Central Organization for Child Care Wageningen) was formed in 1989 when a number of separate organizations decided to join forces. From 1996 to June 2008 we were known as Stichting Koepel Kinderopvang Wageningen or simply "de Koepel".

Kinderkunst BV started up in 1994 and became part of de Koepel in 2005. Up until 31st December 2010, our organization consisted of Stichting Koepel Kinderopvang Wageningen and Kinderkunst BV.

As of 1st January 2011, both organizations have merged into Kinderopvang Wageningen BV.



We offer the following services:

- eight day care locations (0 to 4 years)
- eleven after school care locations (4 to 13 years)
- day care with guest parents (up to 13 years)
- 3 "Spelenderwijs" locations providing child care specifically aimed at child development (2 and 3 years)

Although we work as a single organization, each location has its own character. Please visit our website to learn more about our different locations.

staff members

Kinderopvang Wageningen employs approximately 200 people, almost all of them on a part-time basis. All of our locations have a location manager as well as pedagogic assistants. Naturally, all of our employees meet the current training requirements. Our staff members also take a child first aid course, with a refresh training every year. Additionally, every year we establish a new educational plan for our staff members. The plan incorporates our annual study day, legally compulsory education and additional education selected for our staff members for a specific year.

Our service agency employs approximately 20 people with diverse roles and responsibilities, like quality control, placements, personnel &



organization (including mentors and trainers), finance, facilities, reception and communication.

children

All children are welcome, also those who for whatever reason need extra attention, such as children with a physical handicap, a (chronic) disease or children with intellectual limitations, developmental or behavioural problems.

We want to give them the necessary extra attention, within the abilities and competences of staff members or guest parents.

We will consider per child if we can provide suitable care. Should additional assistance or therapy be necessary, the child will be referred to a specialist.

mission

We strive to offer a wide range of high-quality child care, geared to the needs of parents and children.

We want to offer “room to play” for both children and their parents:

- for children: a safe place where children feel at home and where they can develop themselves to their hearts' content
- for parents: a pleasant and trusted way to combine work and family life



Considering the inextricable relationship between Humans, Environment and Society we want to justify our activities from a social point of view as much as possible. Continuity and sustainability are our key words.

We strive to make children aware of the importance of dealing with everything around us in a responsible and consistent manner. After all, it is never too early to start.

Besides, within the framework of responsible entrepreneurship, our organization aims to contribute to the social and economic development of the city of Wageningen by offering opportunities for volunteer work and reintegration programs, focusing on career path planning and the development of staff members, and acting as a place to learn.

child care law

The child care law stipulates the requirements that child care must meet. These requirements concern a number of policy areas such as safety,



health, pedagogy and regulations regarding involvement.

The city of Wageningen oversees the execution of the law and based on inspection reports compiled by Hulpverlening Gelderland Midden (GGD), the city determines annually if each location meets the requirements to have their child care licence renewed. All our locations have a council licence and are therefore listed in the council register.

covenant regarding quality of child care

Besides legal requirements, the national covenant regarding quality of child care stipulates a number of rules regarding quality. The covenant regarding quality of child care has been set up by the Maatschappelijk Ondernemers Groep (MO-Groep) and the parents' interest protection group for child care (BOinK).

HKZ certification (≈ ISO certification)

As we aim to continually improve the service we deliver to the parents, we are HKZ-certified (≈ ISO certification). The HKZ certification ensures that our organization's quality management system is maintained, and that we continue to meet all requirements set by our sector, our financiers, our customers and the government.

For example, certification requires our pedagogic assistants and guest parents to observe all children once a year to determine if the child feels comfortable in a child care environment. This is done through an objective measuring system that has been developed specifically for this purpose. We also organise regular customer satisfaction surveys to determine areas for improvement. We strive for the highest customer satisfaction and want your children to feel at home with us.

All current policies and procedures, ranging from child care to organizational management, are stipulated in our organizational handbook.

In order to evaluate the quality of our organization, TÜV Nederland carries out audits on a yearly basis. We also organize our own internal audits which allow us to stay focused on possible areas of improvement. All Kinderopvang Wageningen locations are HKZ-certified, with the exception of "Bobbeltjesland" and "de Bofkontjes". These locations will be included in the 2011 internal and external audits.

For more information regarding HKZ-certification please visit www.hkz.nl.

complaints or improvements

When you have a complaint you can let us know through a service improvement form. You can download the form from our website



(organisatie-klachten or klanten-formulieren) or pick up a paper form from your location.

We also like to hear your suggestions for improvements.

In the case that a complaint cannot be resolved to all parties' satisfaction, an external complaints commission can be consulted. We are registered with the external provincial complaints commission of Spectrum-Gelderland.

If you wish, you may also contact the external provincial complaints commission of Spectrum-Gelderland directly. However, we would prefer to try and solve your complaint first before involving the complaints commission.

The annual report of the complaints commission can be found on our website.

3 CHILD CARE (GENERAL)

basic principles of pedagogic policy

A child's development occurs first of all in their own environment, in which the parents are the most important educators. The role of child care centres, and of the individual pedagogic assistants and guest parents is supplementary to the role that the parents play in a child's education, and the education that the child receives at home.

At our child day care centres and with guest parents we strive to create an environment which makes children feel comfortable, stimulates self-confidence and trust in others, and encourages children to develop respect for themselves and for others.

One of our pedagogic principles is to safeguard emotional security. This is achieved by offering structure, assigning permanent pedagogic assistants, and observing rituals and celebrations. Another principle is encouraging children to do things together and to share things, not only "toys and books", but also "happiness and sadness".

On paper it seems very straightforward. Children who feel secure develop a strong basis for their further development. Only when children feel secure, will they start exploring. And only when they start exploring, will they get to know the world. In practise however, it is a lot more complicated but also a lot more interesting. Practise is our area of expertise.

pedagogic policy throughout the organization

Our pedagogic policy describes vision, principles and the basic pedagogic rules with which we work in practise. This policy forms the basis for our organization as a whole. The four educational goals, as described in the

child care law, form an integral part of our policy.

You can read a summary of our pedagogic policy on our website.



The educational goals as described by the law are as follows:

- emotional security
- personal competence
- social competence
- socialization, transfer of culture and norms and values

We have reached an agreement regarding the meaning of the four educational goals and how we will achieve them. These are our pedagogic principles which apply to the organization as a whole.

Based on our practical experience the pedagogic policy, including its basic principles, are regularly reconsidered, evaluated and adjusted. This is done in collaboration with the parental committees. The policy is therefore never “finished”, but always evolving!

pedagogic working method – per location

Supplementary to the pedagogic policy which applies to the whole organization, each location has its own pedagogic working method.

These working methods typically show the location's individual character as well as their own interpretation of the pedagogic policy in practice. Even though we form one single organization, we think it is important to have diversity within our child care programs. For example, the Kinderkunst locations (Kinderkunst, Kievitsnest and Kinderkunstmenzjes) follow the pedagogic vision of Reggio Emilia and a group at Okidoki follows the range of thoughts of Emmi Pikler.

When opting for child care offered by Kinderopvang Wageningen you have a choice regarding the care that is suitable for yourself and for your child. We offer a lot of different choices and support almost every form of child care available.

For more information regarding each location's specific working method, please visit our website (see “locations”).

participation

The child care law provides for parent participation through parental committees. Apart from a central parental committee for the whole organization, each location should also have its own local parental committee. The parental committees advise on topics such as quality of child care, pricing policy, rules and regulations concerning health & safety and nutritional policy.



4 CHILD DAY CARE CENTRES ("KDV")

Children from 0 to 4 years can enter one of our child day care centres. At our centres we offer child care for full days, but flexible care (different days and times) is also available.

size and structure of the groups

Each child day care centre typically has several groups. The composition of each group varies for each day care centre. There are the so-called horizontal groups which are for babies or toddlers only. However, we also have vertical groups which welcome children from 0 to 4 years.

Depending on the age range, available space and number of pedagogic assistants, the size of a group can be anywhere between 8 to 14 children.

assistant-child ratio

Each group has a minimum of 2 pedagogic assistants. We do our best to assign the same assistants to a group, however occasionally we have to work with substitute staff. Each location employs permanent substitute assistants, who will replace the regular pedagogic assistants in case of holiday or sickness.

opening hours

We are open all year round, with the exception of official holidays and our annual study day.

Opening hours day care centres:
07.45-18.15:

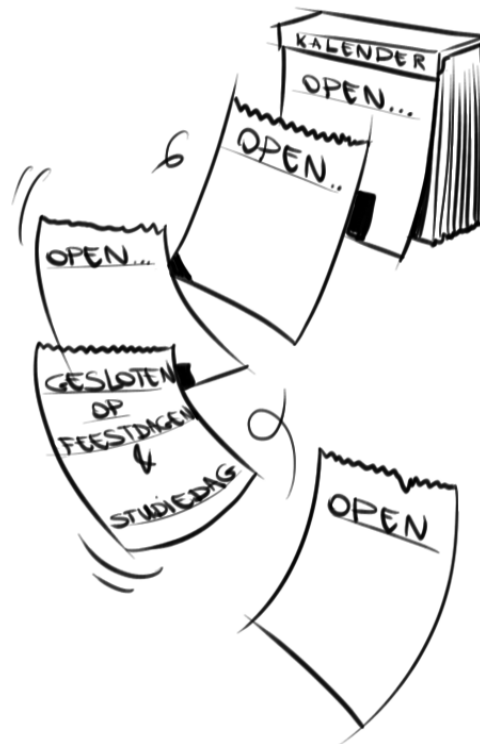
Kinderkunstmenzjes has different opening hours:
07.15-17.45:

We also offer extended opening hours for your convenience:

- kdv-early (from 7.30am until regular opening time) and
- kdv-late (from normal closing time until 6.30pm).

interior design

The child day care centres have a cosy and child-friendly interior design. Furniture and toys are selected based on the children's age and development. Naturally, furniture and design meet the legal requirements.

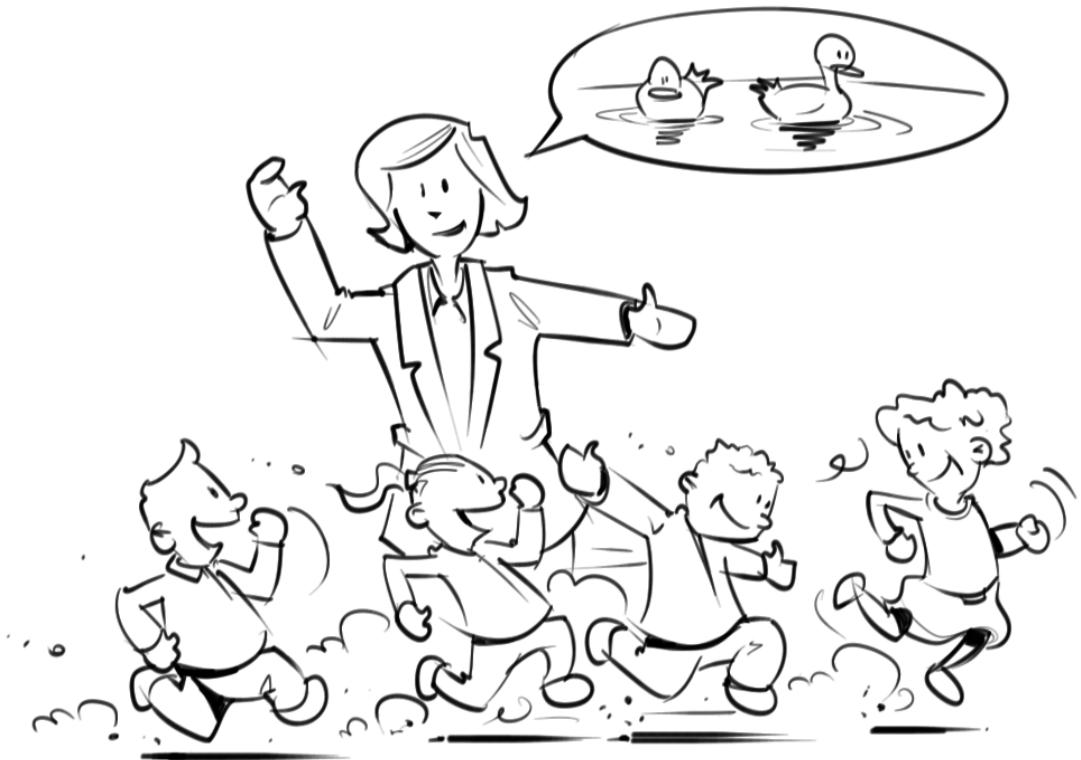


daily schedule

In the morning as soon as we have waved goodbye to the parents, the group can start the day. A day filled with doing games together and discovering new things.

We have a fixed daily structure in terms of eating, drinking and sleeping, but we also ensure there is enough variety: we do things together such as creative art, singing, reading and games, but there is also room for the children to play by themselves.

Every day we get some fresh air. We play outside in the garden or we go for a walk to see the ducks or the shopping centre. While playing, alone or with each other, every child has the opportunity to develop their personal and social skills.

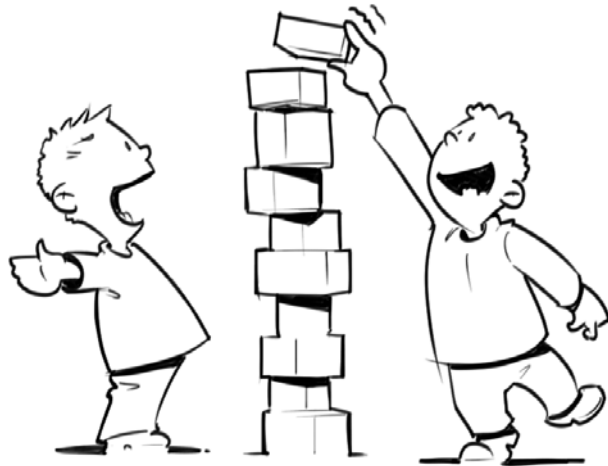


flexible child care

A number of our locations offer day care for children on varying days and times. To find out more about the possibilities of flexible day care, please contact the placement department with our service agency.

and finally...

Should you decide to register your child with one of our child day care centres, we will send you a guide with more detailed information regarding the selected location, together with your placement offer.



5 Spelenderwijs child care

The “Spelenderwijs” groups were set up in 2010 and are the result of the efforts of Wageningen city council, Solidez, Kinderopvang Wageningen and child centre Schateiland to harmonise child care and playgroups throughout the city in four areas: north, south, east and central. As of 16th August 2010, three of the Spelenderwijs locations have been part of Kinderopvang Wageningen (see page 27: overview of locations and contact details).

what is Spelenderwijs?

Spelenderwijs (literally “child’s play”) child care combines the strengths of both child care centres and playgroups. At Spelenderwijs, children of 2 and 3 years old of working and non-working parents alike grow up together, with or without the need for extra support. Spelenderwijs provides plenty of opportunity to learn from each other and gives extra support to children that need this.

extra support through “VVE” (early childhood and preschool education)

VVE (“voor- en vroegschoolse educatie”) stands for early childhood and preschool education. Its objective is to give children the opportunity to develop and prepare themselves for a successful start at primary school. Children who need additional support will receive a recommendation for VVE. The Dutch “consultatiebureau” (child health centre) can issue a VVE recommendation, and can also do this in close consultation with the child care centre.

The Spelenderwijs groups always work with one of the VVE methods available. A VVE method typically focuses on stimulating the complete development of a child.

Each child in a Spelenderwijs group benefits from this working method. The diverse composition of the groups also enriches the children’s learning environment. Exemplary behaviour shown by children has a positive influence on other children. Also, being able to help another child is an important step for children in their acquisition of social competences.

Children with a VVE recommendation will receive all the additional attention and focus that they need. A VVE specialist will be involved to assist with this purpose. The VVE specialists are employed by Solidez and are paid by Wageningen city council.

In addition, the VVE specialists are required to closely observe children with a VVE recommendation. They also support the pedagogic assistants as well as the location manager with the VVE programmes at the different locations and they offer educational support to the parents, if necessary also in the home environment.

All pedagogic assistants who work with the Spelenderwijs groups have already received appropriate training or will be trained to work with VVE.

Two-year-old children with a VVE recommendation are entitled to 3 morning or afternoon sessions per week, while three-year-old children are entitled to 4 morning or afternoon sessions per week.

options

There are 4 different options available, depending on whether your child has a VVE recommendation and whether or not you are entitled to receive child allowance. Please see below which option applies to your situation.

If your child has a VVE recommendation:

- and you are not entitled to child care allowance, option 1 is applicable to you
- and you are entitled to child care allowance, option 2 is applicable to you

If your child does not have a VVE recommendation:

- and you are not entitled to child care allowance, option 3 is applicable to you
- and you are entitled to child care allowance, option 4 is applicable to you

Wageningen city council subsidises Spelenderwijs education for children in options 1 and 3. You will pay a parental contribution which is based on your income. You can calculate the amount of your parental contribution on the website of Wageningen city council.

If option 2 or 4 is applicable to you, you may be entitled to a contribution to the cost through the child care allowance. You may request child care allowance from the Belastingdienst (Dutch tax authorities) and you can calculate the amount of the allowance on their website: www.toeslagen.nl

size and structure of the groups

Depending on age range, available space and number of pedagogic assistants, the size of a group can be anywhere between 8 to 14 children.

assistant-child ratio

Each group has a minimum of 2 pedagogic assistants. We do our best to assign the same assistants to a group, however occasionally we have to work with substitute staff. Each location employs permanent substitute

assistants, who will replace the regular pedagogic assistants in case of holiday or sickness.

opening hours

For the opening hours of our Spelenderwijs locations we refer to the placement department within our service agency.

6 AFTER SCHOOL CARE ("BSO")

Children from 4 to 16 years can enter one of our after school care centres, or the after school centre for teenagers. At our after school care centres we offer child care on fixed days, but care for flexible days is also available.

size and structure of the groups

We generally place children in a group based on age range. We have groups:

- for children from 4 to 7 years
- for children from 7 to 10 years
- for teenagers from 10 to 12 years

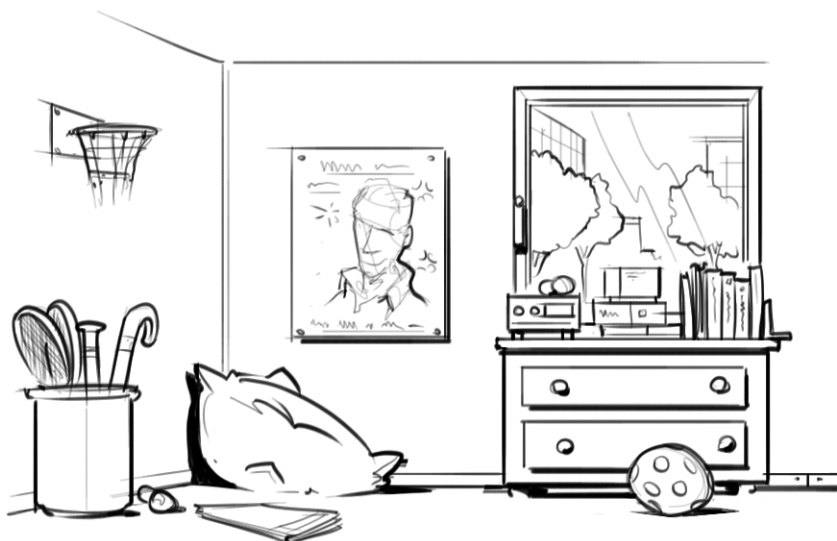
Depending on age range, available space and number of pedagogic assistants, the size of a group at an after school care centre can be anywhere between 10 to 30 children.

assistant-child ratio

Each group has a minimum of 2 pedagogic assistants. We do our best to assign the same assistants to a group, however occasionally we have to work with substitute staff. Each location employs permanent substitute assistants, who will replace the regular pedagogic assistants in case of holiday or sickness.

interior design

The after school care centres have a cosy and child-friendly interior design. Furniture and toys are selected based on the children's age and development. Naturally, furniture and design meet the legal requirements.



opening hours

We are open all year round, with the exception of official holidays and our annual study day.

Opening hours bso locations:

- during school weeks:
 - 14.45 - 18.15 on Monday, Tuesday and Thursday *
 - 11.45 - 18.15 on Wednesday and Friday
 - 14.45 - 18.15 on Friday for children over the age of 8
- during school holidays and school vacation days 07.45-18.15* Monday through Friday

* *on these days after school care centre "de Heksenketel" offers additional after school care from 12:45pm to 2:45pm.*

We also offer extended opening hours for your convenience:

- bso-early (from 7.30am until regular opening time) and
- bso-late (from normal closing time until 6.30pm).

bso-early en bso-late

As stipulated by the law regulating after school care (effective since August 2007), the principals of the primary schools (or the supervising school boards) are responsible for (offering the possibility for) after school care from 7:30am until 6:30pm.

In Wageningen all primary schools have decided to make our organization responsible for the implementation of the after school care law. This means that we offer "bso-early" (pre-school care) from 7:30am for all students of primary schools in Wageningen.

For children already attending one of our after school care centres, we also offer "bso-late" (from normal closing time until 6:30pm).

More information can be found on our website.

vacation days primary schools

When a school is closed due to a school vacation day, one or more of our after school care centres will open for the whole day. This type of after school care is available to all students of primary schools in Wageningen. Please make sure you register your child in time.

More information regarding the regulation concerning vacation days for primary schools can be found on our website.



activities

Aside from the “standard” daily activities, our after school care centres offer many other extra activities. Some of these activities are specific for a certain after school care location, for example the children cooking cafe and ceramics at “het Klokhuis”.

Other activities are available to children from all after school care centres, such as the “sports-bso” and the “swim-bso”.



flexible child care

A number of our locations offer day care for children on varying days and times. To find out more about the possibilities of flexible day care, please contact the placement department within our service agency.

and finally...

Please visit our website for more detailed information regarding specific subjects, such as care during school holidays, how to exchange days, flexible child care, care during primary school vacation days, bso-early and bso-late, as well as transportation to and from after school care centres.

Should you decide to register your child with one of our after school care centres, we will send you a brochure with more detailed information regarding the selected location, together with your placement offer.

6 CARE PROVIDED BY GUEST PARENTS



Through our guest parent agency children from 0 to 13 years can receive care with one of our guest parents.

Because of its more small-scale and homely character, care provided by guest parents is quite different from the care provided by the child care centres. However, our guest parent care is also regulated by the Child Care Law and therefore meets that law's requirements.

guest parents and conciliation agents

Guest parents are not employed by our organization. The guest parents and the guest parents' agency enter into a conciliation agreement which stipulates all rights and duties of both parties. As a parent requesting a guest parent care service, you enter into an agreement with both the agency as well as with the guest parent.

The conciliation agents employed by the guest parent agency select and recruit the guest parents, and carry out an extensive intake process with candidate guest parents. Guest parents must have completed relevant education, or be prepared to follow relevant courses. In addition, they are obliged to complete a first aid course for children.

The guest parents are required to support our pedagogic working method.

We will also conduct an intake interview with you as the parent. We will then start looking for a guest parent who best meets your requirements.

care in a guest parent's house

A guest parent may take care of no more than four children under the age of 4, and in total not more than six children at the same time. This includes any own children of the guest parent. The guest parent's house will be inspected by the guest parent agency to ensure a healthy and safe environment.

child care hours

A guest parent is not bound by an employment agreement with fixed working hours, making flexible hours for child care possible. Guest parents can provide child care outside of normal office hours and on changing days and times. Child care can be tailor-made depending on the parent's needs. In consultation with the guest parents the days and times on which child care is required are decided on, and recorded in a contract.

Child care provided by a guest parent requires an average minimum of 30 hours per child per month, per calendar year. We will charge only an administration fee for any hours taken below this minimum.

and finally

Should you decide to register your child(ren) for care by a guest parent, we will send you additional information about this type of care together with your registration.

7 REGISTRATION

Our placement department takes care of everything relating to your registration and placement of your child at one of our locations. However, you may also contact the department for any issues regarding existing child care, for example in case of changes in your child care requirements, when your child transfers to after school care or if you have any questions regarding invoicing or child care allowance.

You can contact the placement department at our switchboard number 0317-412010, but you may also send an e-mail to: plaatsingen@kinderopvang-wageningen.nl.

your registration

In order to register your child for child care, you can use the registration form enclosed within this information package. Registration is free of charge.

Upon receiving your registration form we will record your information and send you a confirmation of registration.

Only for registrations for Spelenderwijs options 1 and 3:

In order to calculate the amount of your parental contribution, we need a copy of your personal income statement. We therefore ask you to send a copy together with your registration. Should you not provide us with a copy of your personal income statement, you will automatically be included in the highest income category. We will forward your personal income statement to the "centrale aanmeldpunt" (CAR) of Wageningen city council.

Registrations for care by a guest parent are forwarded to the guest parent agency after being recorded.

Three to four months before care is due to start, we will confirm to you if we can indeed offer child care at the location, on the days and starting on the date that you have requested. Order of placement is determined by registration date and a number of priority rules.

Please note that registration is possible not earlier than one year before placement of your child is required to start. Also, placement for a period less than three months is not possible.

placement

child day care and after school care:

Three to four months before the start date, we will contact you to discuss possibilities for placement. Any commitments made regarding placement are recorded in a contract. By signing and returning the contract, you accept the placement. Our notice period will start from that moment.

Before day care starts, you and your child will of course visit the location of your choice. During your visit a pedagogic assistant will inform you of all practicalities and you can provide information about your child. At the end of the visit we will arrange a day when your child can come to the location in order to start settling in.

guest parent care:

At the latest four months before care is due to start, we will send you an invitation for an intake interview at our guest parent agency. The main purpose of this intake interview is to get to know you and your child, and to understand your requirements regarding child care. Following the interview we will decide which guest parent suits your profile best. Any commitments made regarding care are recorded in a contract with the guest parent agency as well as with the guest parent.

terms & conditions and additional disclosures

As a member of the "Maatschappelijke Ondernemersgroep" (MO) we are subject to the general terms & conditions of the MO-group (this is the trade association of which Kinderopvang Wageningen is a member) and those terms & conditions apply to all of our child care contracts.

Additional terms are applicable to child day care and after school care, as well as to the care provided by guest parents, flexible child care and care during schoolholidays (please visit our website for all terms).

changes and cancellations

Should you wish to change the day that your child needs care, or require care on extra days, you can send in a request using our change form or by sending an e-mail. Please submit completed change forms to the pedagogic assistants or send it to the service agency.

We will respond to your request as soon as possible.

Cancellation, partial or complete can only be done in writing. You can use the change form or send an e-mail to submit cancellation requests. Please note that the notice period is 2 months.

Change forms are available at our locations. You can also download the form from our website.

from "kdv" to "bso"
Around your child's third birthday,
we will contact you regarding
your requirements in terms of
transferring your child from child
day care to after school care.



8 FINANCIAL MATTERS

fee form

Please see attached fee form for an overview of the costs for the different types of care. Please note that the true costs are much less, as child care allowance has not been taken into consideration (see the bottom of this page and next).

As a reminder, Spelenderwijs options 1 and 3 do not qualify for child care allowance.

explanation of the fee form:

- Low bso hourly rate (2011): the low bso hourly rate equals the fiscal maximum hourly rate as set by the government. This means that you will qualify for child care allowance calculated over the whole amount. The low bso hourly rate applies to the following types of care:
 - bso care on Wednesday and Friday;
 - bso care on Monday, Tuesday and Thursday in combination with care on Wednesday or Friday.
- If you have bso child care on Monday, Tuesday and/or Thursday only, then the higher bso hourly rate will apply.
- The fees for child day care (kdv) and after school care (bso) are all-inclusive. This means that for example nappies, food (with the exception of bottle-food which you should bring yourself) and transportation (from school to the after school care centre) are included in the price.
- We charge a fixed monthly fee per whole or partial day for regular (= not flexible) child care. Based on the fixed monthly fee and the opening hours, we calculate an average price per hour (so this is not based on the hours that you effectively use for child care).
- The fee for after school care takes into account the normal school weeks and holiday weeks, when the after school care locations are open all day.
- We charge a fixed hourly rate for flexible child day care.
- Fees for flexible after school care and care during school holidays are calculated based on day parts.
- For care provided by guest parents, we charge a fixed rate per hour of care. This rate is composed of a fee for conciliation and counselling and remuneration for the guest parent.

As soon as care starts you will receive a contract which lists the monthly fees, the number of hours of care and the average hourly rate. You will need this information when submitting your request for child care allowance. With regards to flexible care and care provided by guest parents, we will include in the contract an estimate of the number of hours of care your child will use.

At the end of the calendar year we will send you an annual statement. This statement shows the average hourly rate as well as the total number of hours invoiced.

child care allowance

The national government and all employers contribute to the cost of child care via the child care allowance. The allowance is calculated based on a maximum hourly rate.

You are entitled to receive child care allowance if

- you are employed (also self-employed)
- you belong to a target group (for example students and persons participating in a reintegration project)

If you are not employed and don't belong to a target group, but you do need child care for social and/or medical reasons, please contact the local council for support.

The allowance is made up of two parts:

1. An employer fixed contribution which consists of $\frac{1}{6}$ th of the total cost per working parent (a family with two working parents will therefore receive $\frac{1}{3}$ rd; single parents also receive $\frac{1}{3}$ rd).
2. A national government contribution based on income.

Working parents can request both contributions by contacting the Belastingdienst (Dutch tax authorities), via www.toeslagen.nl or phone (0800-0543).

Parents belonging to a target group can request the first part from the Belastingdienst and the second part from the local council or UWV (social security agency).

how much will you be paying net?

The website of the Belastingdienst (www.toeslagen.nl) offers the possibility to calculate an assessment of the allowance you are entitled to. To do this you will need your annual income, number of hours of care and the hourly rate.

On the same website you can download a brochure with more details about the child care allowance.



invoice

Every month you will receive an invoice for the total cost of care. We will debit the money from your account on the first day of every month.

With regards to care provided by guest parents and flexible care, we will invoice you later, once we know the number of hours of child care that you

have effectively used. For all other types of child care we will issue an invoice in advance for the following month.

9 overview Locations and CONTACT DETAILS

service agency

Marijkeweg 22
6709 PG Wageningen

postbus 126
6700 AC Wageningen

phone: 0317-412010
fax: 0317-426206
e-mail: informatie@kinderopvang-wageningen.nl
internet: www.kinderopvang-wageningen.nl

opening hours service agency
Monday through Thursday: 9.00am-12.30pm and 1.00pm-4.30pm
Friday: 9.00am-12.30pm

"Kinderopvang Wageningen" is registered with the Chamber of Commerce under 51418800.

guest parent agency

The guest parent agency is part of the service agency (see details above).
e-mail: gastouderbureau@kinderopvang-wageningen.nl

opening hours guest parent agency
Tuesday through Friday: 9.00am-12.30pm



child day care centres ("kdv")	
kdv De Belhamel (h) Brinkerweg 1 6707 GD Wageningen 0317-351242	kdv Kinderkunst (v) Niemeijerstraat 27 6701 CL Wageningen 0317-451300
kdv Oki Doki (v) Nolensstraat 3 6702 CS Wageningen 0317-460597	kdv Kinderkunstmenzjes (v) Lawickse Allee 130 6709 DZ Wageningen 0317-450310
kdv Pipeloi (v/h) Geertjesweg 3 6706 EA Wageningen 0317-410304	kdv de kleine Wereld (v/h) Industrieweg 27 6702 DR Wageningen 0317-411268
kdv Kievitsnest (v) Kievitsweide 26 6708 BP Wageningen 0317-451070	kdv Villa Beestenboel (v) Haverlanden 88 6708 GP Wageningen 0317-421712

(v)= vertical groups from 0 to 4 years.

(h)= horizontal groups: separate baby and toddler groups

We offer full-day care at all of our child care locations.

Flexible child care is also available at all locations, though certain restrictions apply.

For opening hours of kdv locations see page 10.

Spelenderwijs Groups	
Spelenderwijs Geel (at the kleine Wereld) Industrieweg 27 6702 DR Wageningen 0317-411268	Bobbeltjesland Churchillweg 39 6707 JB Wageningen 0317-412995
de Bofkontjes (in the Ireneschool) Rooseveltweg 350 6707 GW Wageningen 0317-410877	

after school care ("BSO")	
<p>bso de GROTE Wereld (4 - 7 years) Industrieweg 27 6702 DR Wageningen 0317-411268</p>	<p>bso het Kraaiennest (4- 7 years) Brinkerweg 1 6707 GD Wageningen 0317-351242</p>
<p>bso de Heksenketel (4 - 7 years) Geertjesweg 3 6706 EA Wageningen 0317-427732</p>	<p>bso 't Melkhuisje (7-13 years) Churchillweg 39 6707 JB Wageningen 0317-412138 (Afterparty & Chill Out 10+) 0317-413759 (Cool Down 7+)</p>
<p>bso de Kameleon (4+, goes on to 7-10 years) Tarthorst 675 6708 HX Wageningen 0317-843015</p>	<p>bso OkiDoki (4-10 years) (Ondersteboven en Achterstevoren) Nolensstraat 3 6702 CS Wageningen 0317-418975</p>
<p>bso het Kievitsnest (4 - 13 years) Kievitsweide 26 6708 BP Wageningen 0317-451400</p>	<p>bso Ons Huis (7-10 years) Harnjesweg 84b 6706 AV Wageningen 0317-417036</p>
<p>bso Kinderkunst (4 - 13 years) Niemeijerstraat 27 6701 CL Wageningen 0317-451300</p>	<p>bso Villa Beestenboel (4 – 13 years) Haverlanden 88 6708 GP Wageningen 0317-421649</p>
<p>bso 't Klokhuis (4 - 13 years) Piet Bakkerstraat 1-3 6708 SW Wageningen 0317-450404</p>	

We offer both after school care and school holiday care at all of our after school care locations. Flexible child care is also available at all locations, though certain restrictions apply. For opening hours of our after school care centres see page 14.

